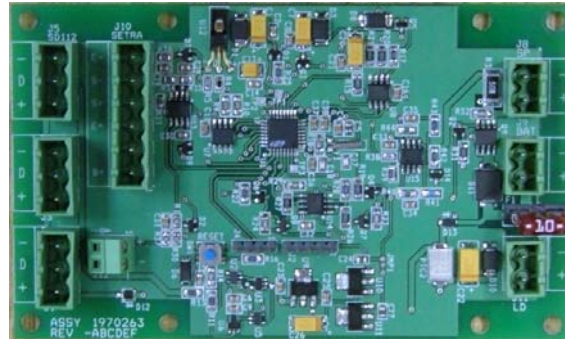




Microcom Design

## SBCM-410

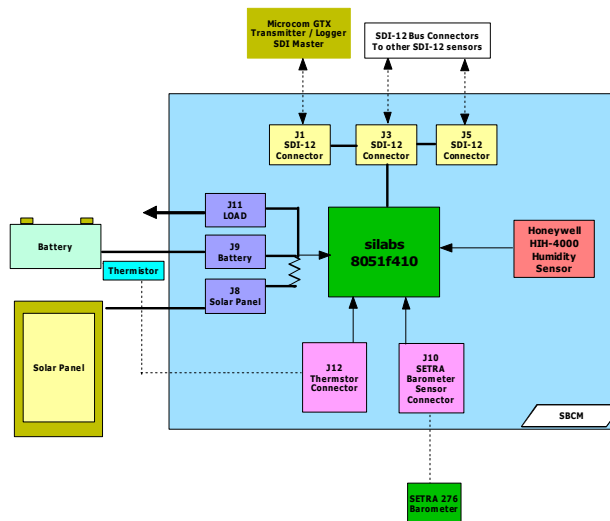
SDI-12 Battery Charger & Multisensor Board



The **SDI-12 Battery Charger & Multi-Sensor Board (SBCM-410)** is an SDI-12 sensor and bus extender. As a sensor the SBCM can forward the following type data:

- 1) Relative Humidity From an on board Sensor
- 2) Barometric Pressure (from optional SETRA 276 Barometer)
- 3) Solar Panel Charger Voltage (from optional attached Solar Panel)
- 4) Battery Temperature (via attached thermistor)
- 5) Battery Voltage
- 6) Charger Current (from on board charger circuit)
- 7) Internal Temperature

In addition, the SBCM also contains three SDI-12 3 wire (power / ground / data) interfaces, which allows for three SDI-12 devices to directly connect to the SBCM SDI-12 BUS. All three connections are in parallel. A block diagram of the SBCM is shown below.



Microcom Design, Inc.  
10948 Beaver Dam Road  
Hunt Valley, MD, USA 21030  
Tel: (410) 771-1070 Fax: (410) 771-0018  
E-mail: [sales@microcomdesign.com](mailto:sales@microcomdesign.com)

Microcom International  
5801 Lee Highway  
Arlington, VA, USA 22207  
Tel: (703) 533-7291 Fax: (703) 533-3190  
E-mail: [info@microcomintl.com](mailto:info@microcomintl.com)

Microcom Brazil  
SIMTECH Representacoes Ltda  
Rua do Mercado, 17 / 1401, Centro  
Rio de Janeiro, RJ, Brasil, CEP 20010-120  
Tel: 21 2506 5900 Fax: 21 2240 1242  
E-mail: [simtech@simtech.com.br](mailto:simtech@simtech.com.br)